

Climate Action Plan



Thomas Jolyffe Primary School



CLIMATE ACTION PLAN



At Thomas Jolyffe Primary School, we believe that small actions can lead to big changes, and we're excited to take steps toward a greener, more sustainable future. Our Climate Action Plan is all about creating a positive impact on the environment while inspiring our students, staff, and families to work together for a cleaner, healthier world.

From reducing waste to saving energy, we are committed to making eco-friendly choices that will benefit not only our school but the community around us. By embracing these efforts, we hope to encourage everyone at Thomas Jolyffe Primary School to become climate champions and help build a brighter, more sustainable tomorrow.

SUMMARY

Not started: 41 items
In progress: 8 items
Completed: 1 item





Section

DECARBONISATION

CARRY OUT A BUILDING ENERGY AUDIT

Conducting a building energy audit helps schools pinpoint areas of energy waste, from heating inefficiencies to unnecessary lighting. Schools can use professional energy assessors or pupil-led monitoring programs to analyse energy usage and recommend improvements. Findings can inform decisions on insulation, lighting upgrades, and behaviour-based energy-saving strategies.

NOT STARTED

DELIVER SOME LESSONS OUTSIDE

Outdoor lessons provide pupils with fresh air and a change of scenery while reducing reliance on indoor lighting and heating. Whether it's reading in a shaded area, conducting science experiments outside, or using school gardens for hands-on learning, outdoor education fosters engagement and sustainability awareness.

NOT STARTED





Section

DECARBONISATION

INSTALL SOLAR PANELS

Installing solar panels requires an MCS certified installer to install them. They will normally be able to give you an idea of the amount of solar panels that can fit on the premises. You'll need to also decide if you would like a battery system as well, to help store energy during winter months when there is less sunshine available.

NOT STARTED

RUN A SWITCH OFF CAMPAIGN

A switch-off campaign raises awareness about energy consumption and encourages simple behavioural changes to reduce waste. Schools can run competitions, put up reminder posters, and conduct audits to track energy savings. Engaging pupils through classroom discussions and real-time energy monitoring can make energy efficiency a long-term habit.

NOT STARTED





Section

DECARBONISATION

TRAVEL SURVEY

A travel survey helps schools gather data on pupil and staff commuting habits. By understanding travel patterns, schools can identify opportunities to encourage more sustainable travel options such as walking, cycling, carpooling, or using public transport. This information can support decisions on bike rack installations, road safety improvements, and incentive programs for eco-friendly commuting.

NOT STARTED

UPGRADE ELECTRICAL APPLIANCES TO ENERGY-EFFICIENT ALTERNATIVES

Schools can significantly reduce electricity consumption by upgrading to energy-efficient appliances, including LED lighting, low-energy projectors, and efficient kitchen equipment. Energy Star-rated devices and appliances use less power, lowering operational costs and environmental impact. Schools should prioritise replacing older, inefficient devices first to maximise savings.

NOT STARTED





Section

DECARBONISATION

IMPROVE INSULATION IN SCHOOL BUILDINGS

Proper insulation helps maintain a stable indoor temperature, reducing the need for heating in winter and cooling in summer. By improving insulation in walls, roofs, and windows, schools can lower energy bills and create a more comfortable learning environment. Over time, these upgrades contribute to significant emissions reductions and cost savings.

Started: 14th Aug 2025

IN PROGRESS

INSTALL LED LIGHTING

LED lighting is a cost-effective and energy-efficient alternative to traditional incandescent and fluorescent bulbs. By switching to LED lighting, schools can significantly reduce electricity consumption and maintenance costs while lowering their carbon footprint. LED bulbs also generate less heat, improving classroom comfort and reducing the need for air conditioning.

Started: 14th Aug 2025

IN PROGRESS





Section

DECARBONISATION

INSTALL MOTION SENSORS TO LIGHTS

Motion sensors automatically turn lights on and off depending on occupancy. By installing these in classrooms, hallways, and restrooms, schools can significantly cut down on wasted electricity. This ensures that lights are only used when needed, reducing overall energy consumption.

Started: 14th Aug 2025

IN PROGRESS

REPLACE WINDOWS WITH ENERGY-EFFICIENT GLAZING

Replacing old, single-glazed windows with energy-efficient double or triple glazing improves insulation, reducing the need for heating in winter and cooling in summer. This upgrade enhances classroom comfort, lowers energy bills, and supports sustainability goals. Schools with outdated windows can apply for grants or funding to offset costs.

Started: 14th Aug 2025

IN PROGRESS



Section

ADAPTATION & RESILIENCE

AUDIT AND REDUCE SINGLE-USE PLASTICS

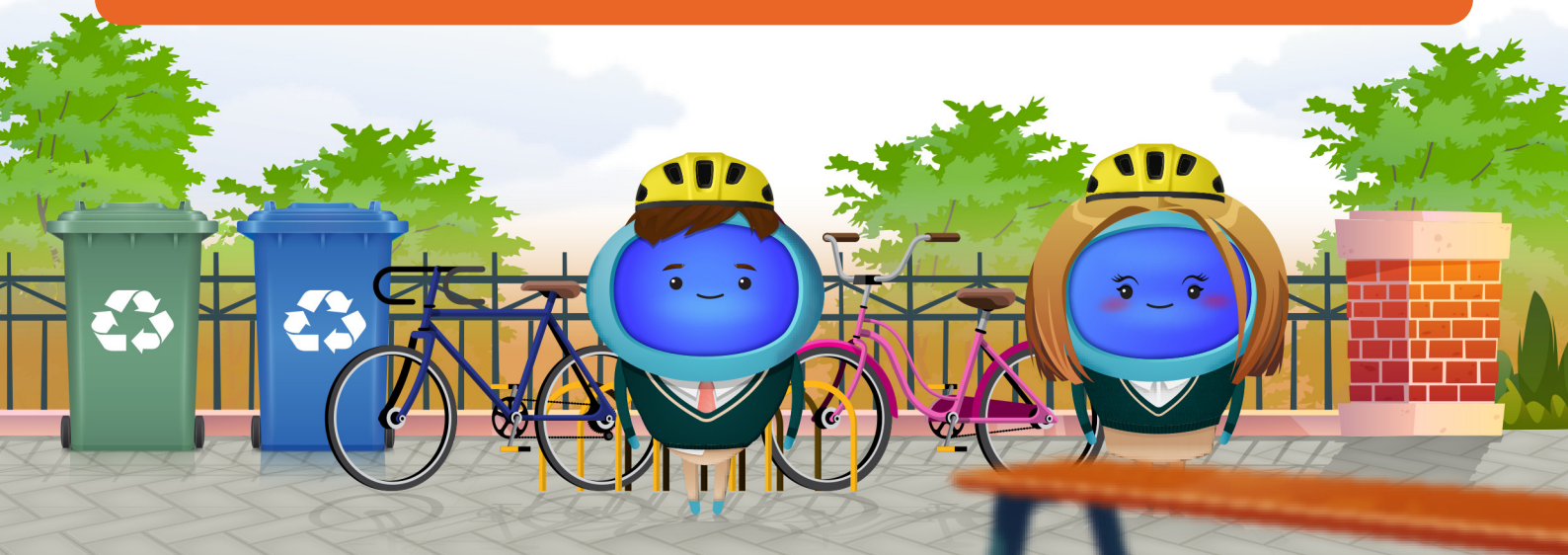
Schools can conduct an audit of their plastic use, identifying areas where single-use plastics can be eliminated or replaced with sustainable alternatives. This includes plastic cutlery, straws, and packaging materials. Encouraging the use of reusable water bottles and lunch containers can also contribute to waste reduction.

NOT STARTED

CREATE A HEATWAVE HEALTH AND SAFETY ASSESSMENT

As heatwaves become more common due to climate change, schools must ensure the wellbeing of pupils and staff during extreme temperatures. A heatwave health and safety assessment should include installing shaded seating areas, increasing hydration points, improving ventilation, and adjusting schedules during hot weather. Proactive planning helps prevent heat-related illnesses while fostering a healthier, more resilient learning environment.

NOT STARTED



Section

ADAPTATION & RESILIENCE

CREATE A SCHOOL COMMUNITY GARDEN FOR FOOD RESILIENCE

Establishing a community garden allows schools to grow their own fruits and vegetables, reducing reliance on external food sources. This initiative provides hands-on sustainability education, promotes healthy eating, and fosters a sense of community among pupils and staff.

NOT STARTED

DEVELOP A RAINWATER HARVESTING SYSTEM

Installing a rainwater harvesting system allows schools to collect rainwater for irrigation, toilet flushing, and other non-drinking uses. This reduces reliance on municipal water supplies and helps schools become more self-sufficient. Additionally, rainwater collection can be integrated into sustainability lessons for pupils.

NOT STARTED



Section

ADAPTATION & RESILIENCE

DEVELOP A WATER CONSERVATION STRATEGY

Schools can adopt water-saving measures such as dual-flush toilets, drought-resistant landscaping, and leak monitoring systems. Educating students on responsible water use can further enhance conservation efforts.

NOT STARTED

FIT SOLAR FILM ON THE WINDOWS

Installing solar film on windows helps regulate indoor temperatures by reducing heat gain in summer and heat loss in winter. This reduces the reliance on air conditioning and heating systems, leading to lower energy consumption and improved comfort in classrooms. Solar film also reduces glare, protects furniture from UV damage, and extends the lifespan of interior materials by preventing sun-related wear. Schools that install solar film benefit from a more stable indoor climate, leading to improved learning conditions and reduced operational costs over time.

NOT STARTED



Section

ADAPTATION & RESILIENCE

INSTALL SUDS PLANTERS

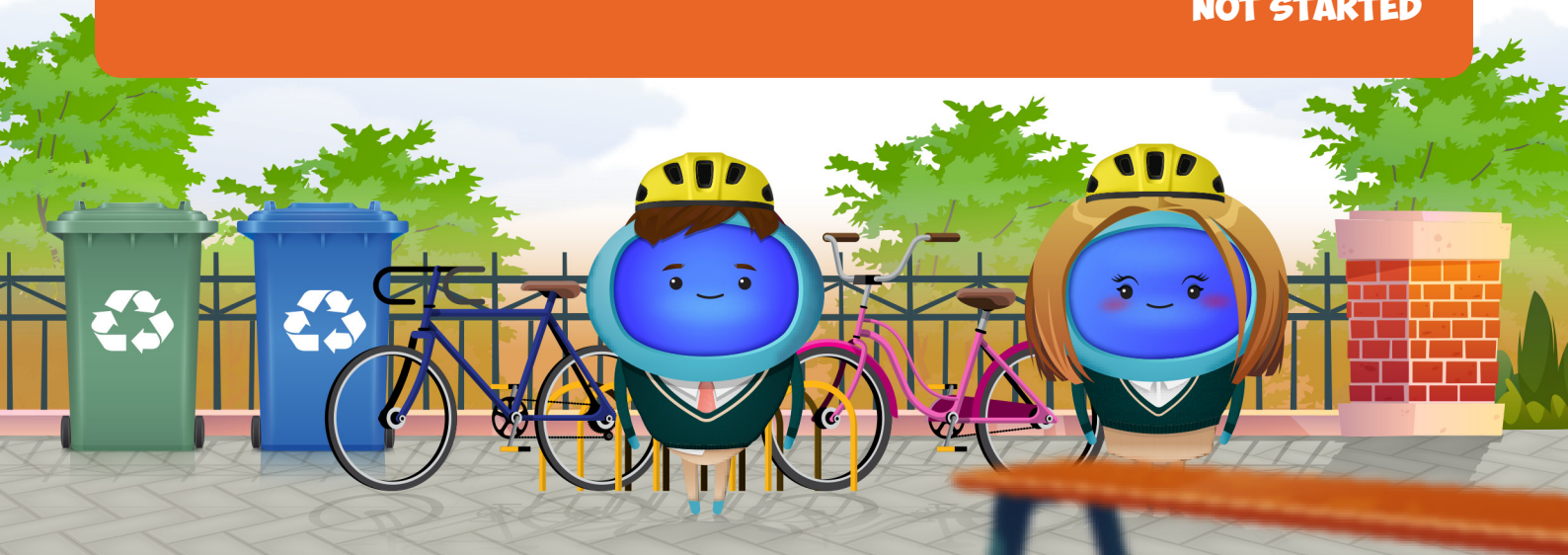
SuDS planters help capture and filter rainwater, reducing surface runoff and preventing localised flooding. These planters act as natural water management systems while also contributing to urban greening efforts by improving biodiversity and air quality. Schools can use SuDS planters in courtyards and playgrounds to add aesthetic appeal while supporting sustainability education. Over time, SuDS planters contribute to a healthier local ecosystem and reduced infrastructure strain caused by excess rainwater.

NOT STARTED

INSTALL WATER BUTTS

Water butts allow schools to collect and store rainwater, reducing dependence on mains water for irrigation, cleaning, and other non-drinking purposes. This initiative helps conserve water, cut utility costs, and educate pupils on sustainable water management practices. Schools implementing water butts can use them to water gardens, supply outdoor play areas, and even contribute to science lessons on water conservation.

NOT STARTED



Section

ADAPTATION & RESILIENCE

PLAN A SCHOOL-WIDE ENERGY REDUCTION CHALLENGE

Engaging pupils and staff in an energy-saving challenge builds awareness and encourages sustainable habits. Schools can track electricity consumption and reward classrooms that achieve the highest reductions.

NOT STARTED

PLANT TREES TO CREATE SHADED AREAS

Planting trees strategically around the school campus provides natural cooling, reducing the need for artificial cooling systems during hot months. Trees also improve air quality by filtering pollutants, enhance biodiversity by providing habitats for birds and insects, and create inviting outdoor learning spaces. As they grow, trees contribute to carbon sequestration, offsetting a portion of the school's emissions while simultaneously improving pupil wellbeing.

NOT STARTED



Section

ADAPTATION & RESILIENCE

SET UP A SCHOOL RESILIENCE COMMITTEE

Establishing a resilience committee ensures ongoing adaptation to environmental challenges. This team, composed of pupils, staff, and community members, can assess risks, implement sustainability policies, and coordinate resilience projects. Regular meetings will help track progress and adjust strategies as needed.

NOT STARTED

SWITCH TO RECYCLED PAPER FOR PRINTING

Schools can significantly reduce their environmental impact by switching to recycled or FSC-certified paper for printing. Recycled paper manufacturing requires less water and energy compared to virgin paper, reducing carbon emissions. Schools should also consider digital alternatives to minimise paper use.

NOT STARTED



Section

ADAPTATION & RESILIENCE

USE REFILLABLE WHITEBOARD MARKERS AND STATIONERY

Many standard whiteboard markers and pens are single-use, contributing to plastic waste. Schools can transition to refillable options, reducing landfill waste and lowering procurement costs in the long run. Refillable stationery is also often made from sustainable materials, further reducing environmental impact.

NOT STARTED

SOURCE CLEANING PRODUCTS WITH ECO-CERTIFICATIONS.

Traditional cleaning products contain harmful chemicals that can pollute water and air. Schools can transition to eco-friendly alternatives certified by environmental agencies, reducing exposure to toxins and supporting sustainability efforts.

Started: 14th Aug 2025

IN PROGRESS



Section

ADAPTATION & RESILIENCE

WORK WITH SUPPLIERS TO REDUCE PACKAGING WASTE

Collaborate with vendors to minimise packaging materials. Long Description: Schools can request that suppliers reduce unnecessary packaging in product deliveries. This can include bulk purchasing to limit plastic wrapping and encouraging the use of recyclable or compostable materials.

Started: 14th Aug 2025

IN PROGRESS





Section

BIODIVERSITY

CARRY OUT A NATURE SURVEY

Schools can conduct nature surveys to document the species of plants, insects, and animals found on school grounds. This information can help identify areas for biodiversity improvement, such as adding nesting boxes, planting native species, or reducing pesticide use. Engaging pupils in biodiversity monitoring promotes conservation awareness and scientific curiosity.

NOT STARTED

CREATE A HERB GARDEN FOR THE KITCHEN TO USE

Schools can create herb gardens to supply fresh ingredients for the kitchen, reducing the need for store-bought herbs and promoting sustainable food practices. Pupils can be involved in growing and maintaining the garden, learning valuable gardening and nutrition skills. Herb gardens also attract pollinators, supporting local biodiversity.

NOT STARTED



Section

BIODIVERSITY

CREATE A SCHOOL POLLINATOR GARDEN

A school pollinator garden provides a habitat for bees, butterflies, and other beneficial insects. By planting native wildflowers and nectar-rich plants, schools can contribute to biodiversity and support local ecosystems. These gardens also serve as valuable outdoor learning spaces where pupils can observe pollination in action and learn about the role of insects in food production.

NOT STARTED

INCREASE GREEN SPACE

Schools can transform unused or paved areas into green spaces by planting native plants, installing grass patches, or creating small gardens. Increasing green space improves air quality, provides habitats for wildlife, and creates healthier environments for students. Green spaces can also serve as outdoor learning areas, promoting environmental education.

NOT STARTED





Section

BIODIVERSITY

JOIN COMMUNITY INITIATIVES

Community environmental initiatives such as tree planting, litter picking, or local green space protection projects can provide excellent opportunities for pupils and staff to make a positive impact on their local environment. These initiatives also help build a culture of sustainability within your school or MAT.

NOT STARTED

PARTICIPATE IN THE RSPB BIRDWATCH

Schools can engage pupils in the Royal Society for the Protection of Birds (RSPB) Birdwatch, an annual citizen science event where participants record and report bird sightings. This initiative helps develop observation skills, raises awareness of biodiversity, and contributes valuable data for conservation efforts. Schools can integrate this activity into science and geography lessons to reinforce learning.

NOT STARTED





Section

BIODIVERSITY

PLANT A HEDGE TO CREATE A NATURAL WINDBREAK

Hedgerows provide shelter for wildlife, improve air quality, and act as a natural windbreak to protect school buildings and playgrounds. They enhance green spaces while reducing noise pollution and improving local air quality.

NOT STARTED

SIGN YOUR SCHOOL UP TO EDUCATION NATURE PARK

Schools can participate in local or national education nature park programs to connect pupils with nature-based learning experiences. These programs provide hands-on engagement with biodiversity, conservation, and sustainability. By participating, pupils gain a deeper appreciation of the environment, and schools can access valuable teaching resources and support for outdoor learning initiatives.

NOT STARTED





Section

BIODIVERSITY

START A GARDENING CLUB

A gardening club provides pupils with hands-on experience in growing flowers, vegetables, and trees, while also teaching them about sustainability, soil health, and biodiversity. Gardening improves mental well-being, fosters teamwork, and enhances outdoor learning opportunities. Schools can use gardens to produce food, beautify the environment, and engage pupils in long-term eco-friendly initiatives.

NOT STARTED

WORK WITH THE PUPILS TO GET THEIR VIEWS ON HOW THE SCHOOL SITE SHOULD LOOK

Schools can involve pupils in decision-making about their learning environment, ensuring that sustainability considerations are incorporated. Whether through workshops, surveys, or school councils, pupil input can lead to more effective green space planning, improved outdoor learning areas, and projects that align with their needs and interests. Involving pupils also increases their sense of ownership and responsibility for the school environment.

NOT STARTED



Section

BIODIVERSITY

BUILD AN INSECT HOTEL

Log piles and disused wood pallets can be used to create a natural habitat for insects, amphibians, and fungi, enhancing biodiversity and promoting decomposition processes. They can be strategically placed in school gardens to serve as learning tools for ecology studies.

Started: 14th Aug 2025

IN PROGRESS

GET A COMPOST BIN TO REDUCE FOOD WASTE

Composting helps reduce landfill waste while creating nutrient-rich soil for school gardens. Schools should consider site suitability, maintenance requirements, and pest prevention strategies. Composting can also be incorporated into science lessons, providing pupils with hands-on learning about decomposition and soil health. Schools with kitchen facilities can work with catering teams to compost food scraps, further reducing waste.

Started: 14th Aug 2025

Completed: 14th Aug 2025

COMPLETED



Section

CLIMATE EDUCATION & GREEN SKILLS

CREATE A 'SUSTAINABILITY IN CAREERS' DAY

By exposing pupils to careers in sustainability, schools can inspire future professionals who prioritise environmental responsibility. This event can feature guest speakers, panel discussions, and interactive workshops showcasing opportunities in renewable energy, environmental policy, and sustainable business practices.

NOT STARTED

CREATE A SCHOOL SUSTAINABILITY PLEDGE PROGRAM

Schools can implement a pledge program where pupils and staff commit to eco-friendly actions such as reducing waste, conserving energy, and using sustainable transport. Regular updates and rewards keep engagement high.

NOT STARTED



Section

CLIMATE EDUCATION & GREEN SKILLS

DEVELOP AN OUTDOOR LEARNING PROGRAM FOCUSED ON NATURE

Outdoor learning programs provide pupils with hands-on experiences in nature, teaching them about local ecosystems, biodiversity, and conservation. Schools can create learning gardens, conduct nature walks, or collaborate with conservation groups to enhance pupil engagement with the environment.

NOT STARTED



Section

CLIMATE EDUCATION & GREEN SKILLS

DEVELOP THE SCHOOL'S OWN SUSTAINABLE COOKBOOK

Schools can develop their own cookbook, focusing on recipes that emphasise local, seasonal, and low-waste ingredients. This initiative encourages students and families to make more sustainable food choices while reducing food waste. The cookbook can be created with input from pupils, staff, and parents, turning it into a community-driven sustainability project. Digital versions can further reduce printing costs and environmental impact.

NOT STARTED



Section

CLIMATE EDUCATION & GREEN SKILLS

HOST A SUSTAINABILITY-THEMED ASSEMBLY EACH TERM

Hosting a sustainability-themed assembly each term ensures that pupils remain engaged with environmental topics. These events can feature guest speakers, pupil-led presentations, and school-wide challenges to encourage participation. Assemblies help build a culture of sustainability and reinforce its importance throughout the school community.

NOT STARTED

IMPLEMENT A SUSTAINABLE SCHOOL UNIFORM POLICY

Schools can work with suppliers to source uniforms made from organic, recycled, or ethically produced materials. Encouraging second-hand uniform sales and repair workshops can further reduce waste and environmental impact.

NOT STARTED



Section

CLIMATE EDUCATION & GREEN SKILLS

INTRODUCE A SUSTAINABILITY LESSON IN EVERY SUBJECT

Embedding sustainability into the curriculum across all subjects helps pupils develop an awareness of environmental issues. Science classes can discuss climate change, geography can cover ecosystems, and mathematics can explore energy consumption statistics. By integrating sustainability into daily learning, pupils can develop a mindset of environmental responsibility and apply these principles beyond the classroom.

NOT STARTED



Section

CLIMATE EDUCATION & GREEN SKILLS

LAUNCH A CARBON FOOTPRINT AWARENESS CAMPAIGN

Schools can run campaigns to educate pupils and staff about their carbon footprints and practical ways to reduce them. Through posters, workshops, and hands-on activities, pupils can learn how their transportation choices, food consumption, and energy use contribute to emissions. This knowledge can lead to long-term changes in behaviour that support sustainability goals.

NOT STARTED

LAUNCH A SUSTAINABLE COMMUNTE CHALLENGE

Schools can organise competitions and incentives to promote walking, cycling, or public transport use instead of cars. This helps cut emissions, reduce traffic congestion, and encourage healthier lifestyles.

NOT STARTED



Section

CLIMATE EDUCATION & GREEN SKILLS

ORGANISE A PUPIL-LED ENERGY AND WASTE AUDIT

A school-wide audit allows pupils to evaluate energy use and waste production, identifying areas for improvement. This hands-on approach helps pupils understand real-world sustainability challenges and implement practical solutions such as reducing electricity use, recycling more effectively, and cutting down on single-use plastics.

NOT STARTED

ORGANISE A WALK TO SCHOOL WEEK

Encouraging pupils and staff to walk, bike, or use public transport instead of driving can reduce emissions and improve local air quality. A Walk to School Week helps raise awareness about the environmental and health benefits of active travel.

NOT STARTED



Section

CLIMATE EDUCATION & GREEN SKILLS

PROVIDE STAFF CPD ON EMBEDDING SUSTAINABILITY IN THE CURRICULUM

Schools can offer CPD sessions focused on embedding sustainability across subjects, ensuring that educators have the knowledge and resources to integrate environmental topics effectively. UCL's free Teaching for Sustainable Futures course is available for Geography and History teachers, but training should also support other subjects in incorporating sustainability themes. Ensuring teachers have dedicated time for curriculum development helps make sustainability a lasting part of the school's educational framework.

NOT STARTED



Section

CLIMATE EDUCATION & GREEN SKILLS

CREATE A SCHOOL ECO COMMITTEE

A school eco committee gives pupils the opportunity to lead sustainability projects, influence school policies, and advocate for environmental improvements. This initiative fosters leadership, encourages responsibility, and ensures sustainability remains a core focus in school decision-making.

Started: 14th Aug 2025

IN PROGRESS

